

TECHNICAL SHEET

# WELD ONE

## WELDING FUMES

Compact fume extractor for welding torches with remote control from the welding machine.



**POWER**  
1,3 kW



**SURFACE**  
30.000 cm<sup>2</sup>

## HIGHLIGHTS



### SUCTION UNIT

The vacuum is generated by 1 or 2 by-pass motors. Each motor is managed by an independent switch, permitting the operator to control the intake performance. The motors are located in a sturdy casing, with an insulating sponge to maintain a low noise level.



### CELLULOSE CARTRIDGE

A sturdy cellulose cartridge enables the capturing and the filtration of welding fumes guaranteeing the efficient protection of the operator's health.



### AIR FLOW REGULATOR

Thanks to the air flow regulator it is possible to increase or decrease the airflow of your welding torch.



### REMOTE CONTROL

A sensor installed on one side of the unit enables the operator to control the machine directly from the welding unit. Passing the cable in the clip will make it so that when the welding starts the vacuum cleaner will start at the same time.

**TECHNICAL DATA**

ENGINE		PRIMARY FILTER		MACHINE	
Suction type	by-pass	Type	cartridge	Inlet	40 Ø mm
Voltage	230 V	Class EN 60335-2-69	M Class	Dimensions	300 x 300 mm
Maximum vacuum	250 mBar	Media	cellulose	Height	720
Maximum air flow	190 m3/h			Weight	25 Kg
Noise level - (EN ISO 3744)	72 dB(A)				
Engine	1				
Frequency	50/60 Hz				
Power	1,7 HP				

**OPTIONS**



**AVAILABLE FILTER MEDIA**



**HEPA 14**

Absolute filter (EN 1822-5)

**OPTIONS**

**STRUCTURE AND OPTIONS**



**PTFE + CA**

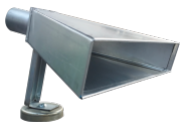
Polytetrafluoroethylene + carbon



**RC**

Remote control 24V ON/OFF

**ACCESSORY**



**P12000**

Suction hood (400x50mm)

Galvanised steel suction hood for welding fumes or suspended dusts. Connection for 50mm diameter pipe with bracket and magnet for positioning it